

Municipality of
Anchorage



P.O. Box 196650
Anchorage, Alaska 99519-6650
Telephone: (907) 343-7100
Fax: (907) 343-7180
Email : www.muni.org

Mark Begich, Mayor

For Immediate Release

October 1, 2008
2008-103

Contact: Holly Spoth-Torres, 343-4585

NEW TRAIL IN MIDTOWN WILDLIFE SANCTUARY OPENS

King Career Center Students Complete Work Thursday

A new, soft-surface trail in the [Helen Louise McDowell Sanctuary](#) will open for community use, creating access to open green space and wildlife in the middle of urban Anchorage on Friday, October 3. In preparation for the opening, King Career Center students will be placing the finishing touches on a section of the boardwalk between 8:30 – 11 a.m. (see directions attached, [Park along St. Gotthard Avenue](#)) on Thursday, October 2.

Government agencies, non-profits and community volunteers worked together to build ¾ mile of soft surface trail and boardwalks through the park, creating a multi-use neighborhood loop for the Tudor-New Seward community, similar to the Alicia Iden Nature Trail at Baxter Bog Park.

“The Helen Louise McDowell Sanctuary property connects to many neighboring residential developments and provides a natural place, free of pavement and traffic, for Anchorage residents, schoolchildren and neighbors to enjoy,” said David Mitchell, Conservation Director of the Great Land Trust.

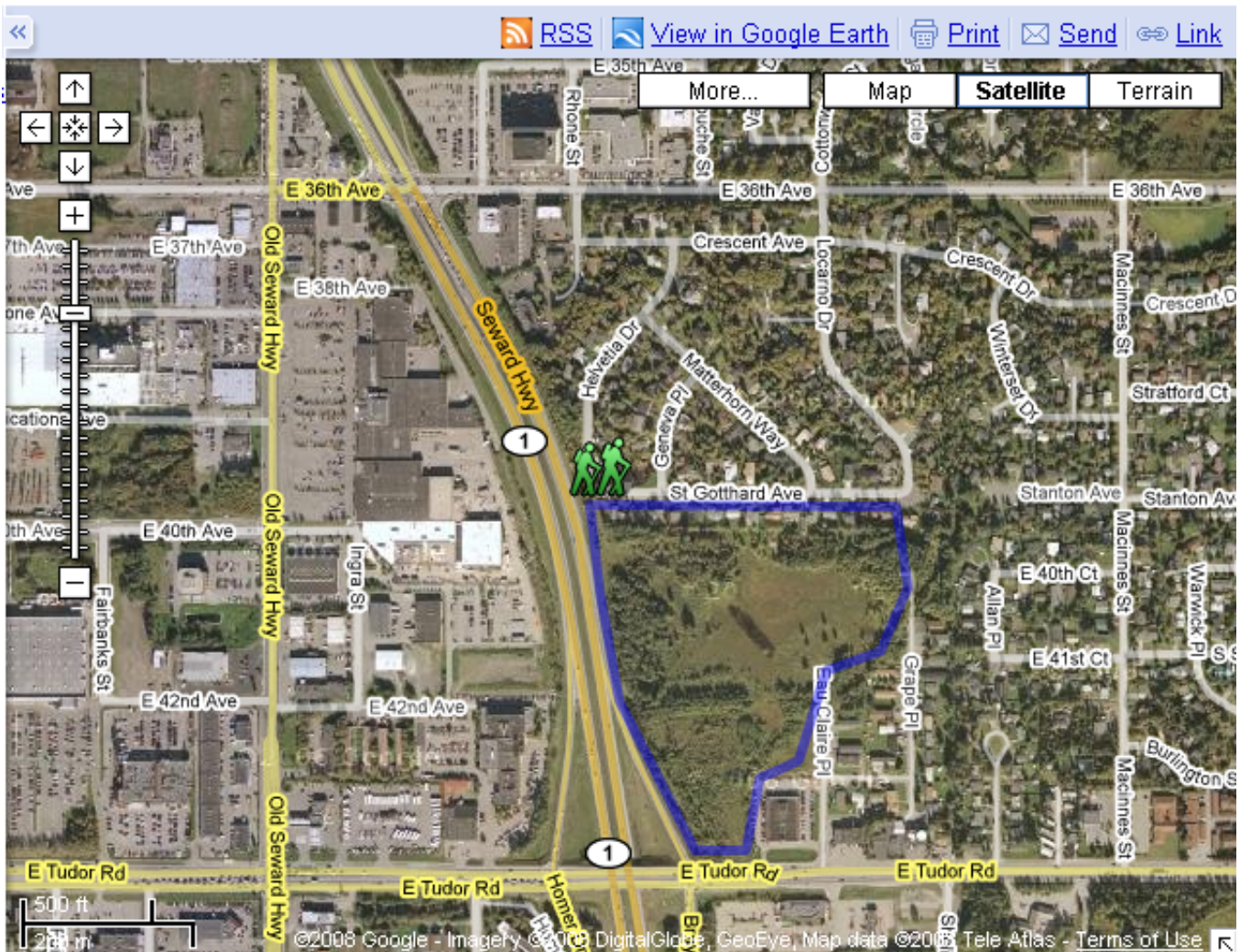
The Helen Louise McDowell Sanctuary is a sanctuary for both the midtown community and Anchorage-area wildlife. Bordered by two major road systems, this natural area provides habitat and food for moose and several birds, including warblers, creepers, and chickadees. The intact wetlands also provide excellent resources for nesting and rearing young. Besides wildlife viewing opportunities, the Sanctuary offers uninterrupted views of the Chugach Mountains, reflected in the wetlands and pond.

The Great Land Trust purchased these 14.37 acres of undeveloped land in midtown Anchorage in 2003, with funds from an anonymous donor and the Rasmuson Foundation. After the purchase, the Great Land Trust transferred ownership of the Sanctuary to the Municipality of Anchorage, while maintaining a conservation easement on the property to preserve the open space in perpetuity.

(more)

This summer, Alaska Trails kicked off construction work on National Trails Day, with volunteers and professional trail builders ultimately contributing over 300 hours of labor. Volunteers included neighborhood work parties, Boy Scout troops, and students from the King Career Center. The second phase of trail construction, planned for next summer, will include more soft-surface trail and boardwalk combinations with three bridges to span wet areas.

- Directions:
- East of the New Seward Highway
 - Drive East on 36th Avenue
 - South on Locarno Drive
 - West on St. Gotthard Avenue
 - Access to new trail is near the end of St. Gotthard Ave. on the south side of the street.



###