

Municipality of
Anchorage



P.O. Box 196650
Anchorage, Alaska 99519-6650
Telephone: (907) 343-7100
Fax: (907) 343-7180
Email : www.muni.org

Mark Begich, Mayor

FOR IMMEDIATE RELEASE

April 14, 2008

Contact: Beth Nordlund, 350-9482

NEIGHBORS PLAN TO REBUILD SCOTTY GOMEZ HOCKEY RINK

Scotty Gomez Foundation partners with Anchorage Park Foundation

Tuesday at 1:15 p.m., the media is invited to Tikishla Park in East Anchorage. The rink is snowy, but the setting is the place to announce summer plans to rebuild the Scotty Gomez Hockey Rink.

Airport Heights Community Council received a \$40,000 Challenge Grant this week from the Anchorage Park Foundation to rebuild the Scotty Gomez Hockey Rink. The Anchorage Park Foundation is partnering with the Scotty Gomez Foundation and the community council to raise funds and organize volunteer labor for a “community build” project this summer.

This is the first capital grant the Scotty Gomez Foundation has awarded and it is a great place to start. Scotty Gomez grew up playing at this neighborhood hockey rink. Considering the boards haven’t been replaced since the rink was built over 25 years ago, it is due for a facelift. The rink is a slightly undersized practice rink in the Airport Heights neighborhood where rentals generally go to teams with “pee wee” and “mites” in their names.

“We are happy to help rebuild this rink. I think this community-build is a great way to give back to our neighborhood” says Carlos Gomez, father of National Hockey League player Scotty Gomez.

“I want to thank the Scotty Gomez Foundation, the Rasmuson Foundation, and the Anchorage Park Foundation for bringing about this community investment,” said Mayor Mark Begich. “Volunteer labor, materials, private donations, municipal staff time and possibly some state legislative funding will come together to improve this neighborhood rink for our kids.”

The rink rebuild project, which will be fully scoped when the snow melts, will take place on the current Scotty Gomez Hockey Rink footprint, but depending on the site condition reconstruction may include:

- demolishing the boards
- stabilizing the foundation
- resurfacing the rink
- installing new boards
- installing new energy efficient lighting

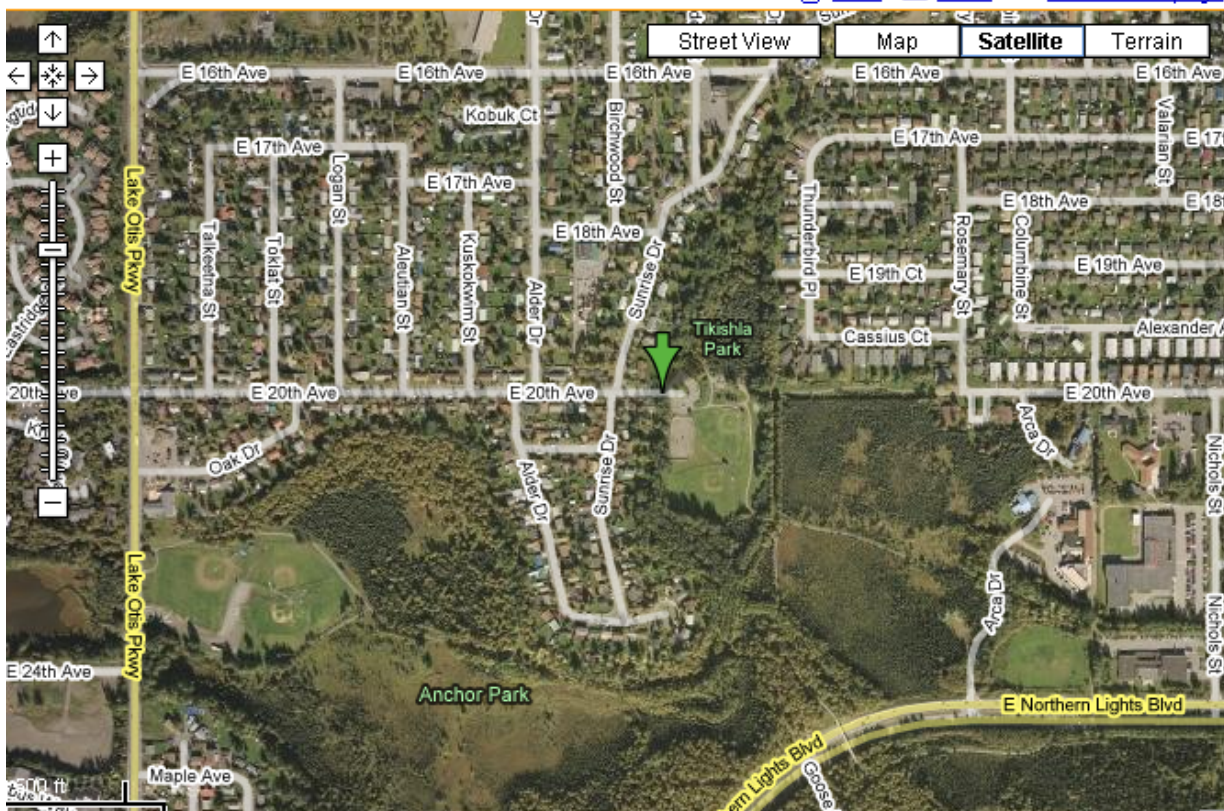
At project completion the new surface will provide more summer use opportunities for sports such as roller hockey.

The budget for the project could be up to \$200,000, but costs will be kept low with volunteer labor support. Volunteers and friends of Mr. Gomez are welcome to call Anchorage Parks and Recreation at 343-4492 to participate.

Airport Heights Community Council Chair Jon Spring is looking forward to improving the park, “We’d like to see wide community support for this project. I invite you all to help with your time or money.”

For more information see www.AnchorageParkFoundation.org

Tikishla Park can be found at the east end of 20th Avenue in Airport Heights: [3018 E. 20th Ave.](#)



###